

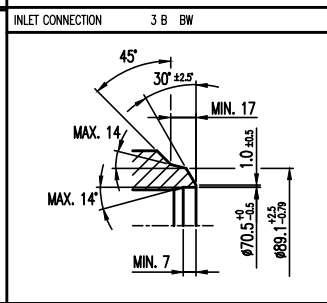
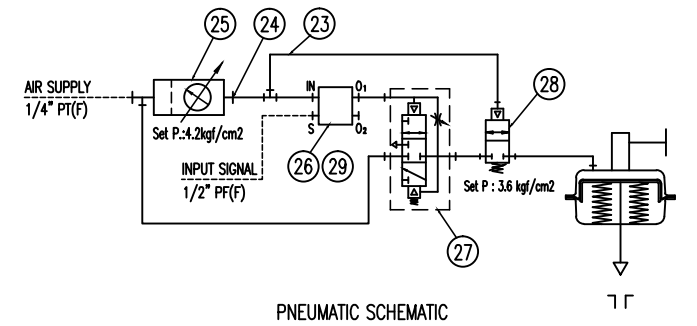
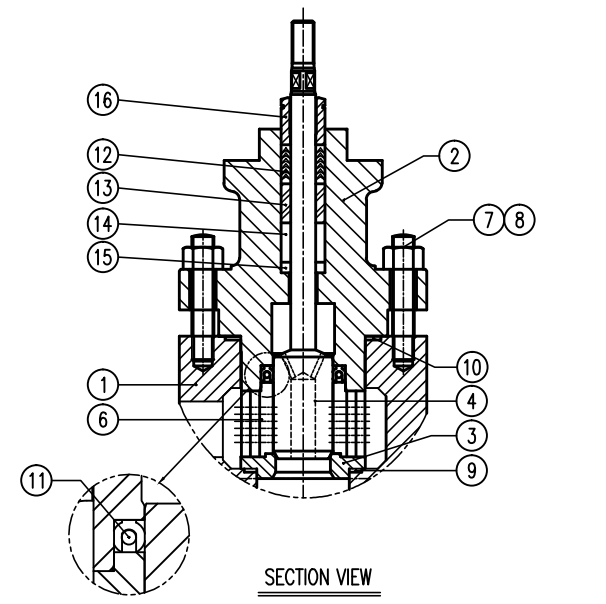
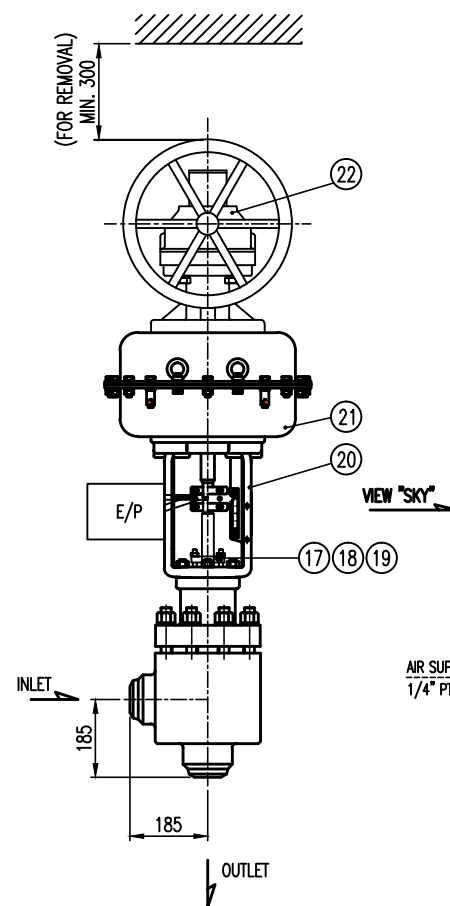
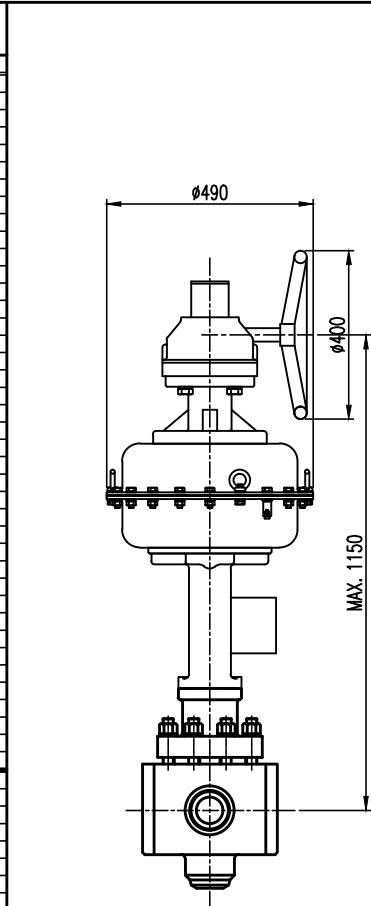
THIS DOCUMENT CONTAINS PROPRIETARY INFORMATION WITH ALL RIGHTS AND TITLE RESERVED AND MAY NOT BE REPRODUCED IN WHOLE OR PART WITHOUT WRITTEN CONSENT OF SVC Inc.

NO	NAME	MATERIAL	Q'TY	REMARK
1	BODY	A182 F11	1	-
2	BONNET	A182 F11	1	-
3	SEAT	440C SS + HT	1	-
4	SPINDLE	440C SS + HT	1	-
5	-	-	-	-
6	CAGE	410 SS + HT	1	-
7	BONNET STUD	A193 B7	12	-
8	BONNET NUT	A194 2H	12	-
9	SEAT GASKET	304 SS + G.F	1	-
10	BONNET GASKET	304 SS + G.F	1	-
11	BALANCE SEAL	316+HFE (25% Carbon)	1 SET	-
12	PACKING	V-PIRE (25% CARBON)	1 SET	-
13	PACKING SPACER	316 SS	1	-
14	STEM GUIDE	CARBON	1	-
15	PACKING SPACER	316 SS	1	-
16	PACKING FOLLOWER	316 SS	1	-
17	PACKING FLANGE	A351 CF8	1	-
18	PACKING FLANGE BOLT	304 SS	2	-
19	PACKING FLANGE NUT (WITH WASHER)	304 SS	2	-
20	YOKE	A216 WCB	1	-
21	ACTUATOR ASSY	SVC standard	1	-
22	SIDE HANDLE ASSY	SVC Standard	1	-
23	TUBING	316 SS	A/R	-
24	FITTING	316 SS	A/R	-
25	FILTER REGULATOR	Y.T.C	1 SET	-
26	POSITIONER	Y.T.C	1	-
27	VOLUME BOOSTER	Y.T.C	1 SET	-
28	LOCK-UP VALVE	Y.T.C	1 SET	-
29	POSITION TRANSMITTER	Y.T.C	1	-
30				
31				
32				
33				
34				
35				
36				
37				
38				
39				
40				

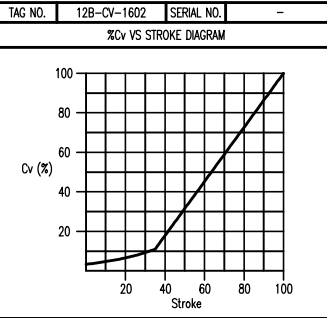
MAIN ELEMENT			
PRESS. CLASS	ASME 1500		
DESIGN PRESS. / DESIGN TEMP.	205 KG/CM2 / 245 °C		
MAX. PRESS AT 100°F	258.6 BARG		
HYDROTEST PRESSURE	388 BARG		
MAX CV AT 100% STROKE	50		
MAX. SEAT LEAKAGE	146.592 CC/MIN (60 PSIG : WATER)		
BONNET FLG. NUT TORQUE	452-499 Nm		
OPERATOR			
TYPE	SPRING DIAPHRAGM		
SUPPLY	4.2 KG/CM2		
SIGNAL	IN 4~20mA	OUT 4~20mA	
INCREASING SIGNAL	CLOSE	ELEMENT	
FAILURE POSITION / MECHANISM			
FAILURE POSITION / MECHANISM	LOCK	SPRINGS	
NOMINAL STROKE	60 MM		
STROKE TIME (sec)	STD sec	OPEN, STD sec	CLOSE
VALVE AND OPERATOR WEIGHT	STD kg		

NOTE.

1. VALVE ORIENTATION TO BE STEM VERTICAL WITH ACTUATOR UP.
2. ALL DIMENSIONS WITHOUT STATED TOLERANCES ARE FOR REFERENCE ONLY
3. SEAT LEAKAGE : ANSI B16.104/FCI 70.2 CLASS IV
4. CONTROL VALVE SIZING IS BASED ON ISA 575.01
5. VALVE MINIMUM WALL THICKNESS IS BASED ON ASME B16.34
6. HYDROTEST PRESSURE IS BASED ON ISA 75.19
7. ALL DIMENSIONS ARE IN MM, EXCEPT ( ) ARE IN INCHES
8. STANDARD SVC TAGGING ONLY



INLET CONNECTION 3 B BW  
 OUTLET CONNECTION 3 B BW  
 SAME AS INLET



REV.	DATE	DESCRIPTION	PREPARED	CHECKED	REVIEWED	APPROVED
1	2019.04.22	FOR PROPOSAL	AN. LEE	DG. HA	JS. PARK	

CUSTOMER: POSCO  
 CLIENT: POHANG POSCO  
 DRAWING NAME: APPROVAL DRAWING FOR GLOBE CONTROL VALVE  
 APPLICATION: BOILER FEED WATER CONTROL (20%)  
 DRAWING NUMBER: -

SVC	MODEL NO.	SV230D	SCALE	N / S	SIZE	A3
			SHEET	1 OF 1	REV.	A